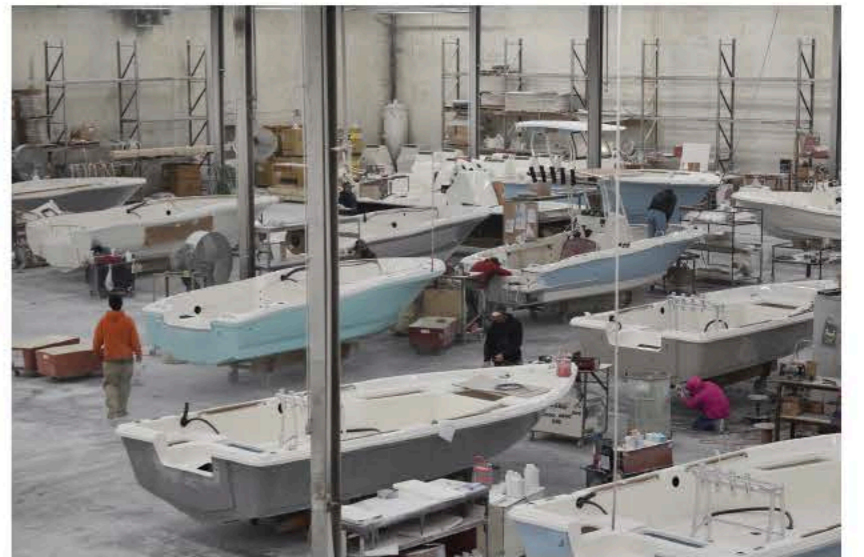




Pioneer



Just got my new 202 Sportfish and ran it for two days solid and I have to say this company absolutely builds one of the best boats I have had the pleasure of owning. Love the new additions for 2018 with the bigger swim platforms and stainless ribbing make this boat look absolutely amazing in the water. It is a fishing machine that disguises itself as a family fun boat. The ride is awesome in most wave heights and keeps you dry. I purchased this boat at the Orlando boat show and I have to say my family looks forward to many years of fun with this boat.

- Lindsay D - Palm Coast, FL

We've had our Pioneer for a year now..it's our first family boat and we love everything about it. Lots of great memories being made.

- Cindy R - Monks Corner, SC

We bought our 2016 197SF last April and love it! Our dealer made purchasing the boat a great experience, we've recommended them and the Pioneer to several people. It's a great all around boat.

- Michael-Loriel V - West Palm Beach, FL

Very well constructed boats at a great price point. The attention to detail in these boats is far above many others in its class. I will be a Pioneer Boat owner for life.

- John L - Jamestown, NC

We bought a 2013 sport fish 222 and absolutely love it. Roy and Henry have been great to work with. We are a family of 3, we use the boat for fishing, cruising with friends in both fresh and salt water. Great fun, great quality.

- Robert S - Charleston, SC



Loving the boat since the day we ordered it and now, 43 hours later. Had a great meeting and tour with Henry while waiting for the boat to be built.

- Steve B - Florence, SC

We at Pioneer are constantly pushing the envelope in design and construction methods to ensure we deliver the absolute toughest, eye catching products that are sure to satisfy you and your family's boating needs for many years to come. With the "Pioneering" spirit in mind, we welcome you to inspect our product in person. It is our hope that you will begin to realize how superior our boats are constructed, understand the value our product offers over long term ownership.

Raw Materials - Pioneer boats are constructed with the highest grade raw materials available to the boating industry today. Developed in conjunction with Ashland Chemical Company, we believe in our method of construction so strongly that Pioneer backs each hull with a Limited/Lifetime structural hull warranty.

Laminate - Other boat builders use inferior, cost effective resin systems to mass produce products. At Pioneer we combine the highest quality, Bi-axial, quad axial and iso based resin/gel coat systems to insure each Pioneer is built with outstanding strength to weight ratio. No woven rovings here! Our construction techniques are meant to last a lifetime, save money and allow peace of mind.

Flotation - All Pioneers are unsinkable! While utilizing a 2.3 LB density closed cell foam, our flotation foam is 30% more dense than the industry standard. Pioneers are pressure injected with flotation foam to fill filled up to 90% of the vacant air space between the hull and deck far exceeding the U.S. Coast Guards flotation requirements.

Reverse Cap Deck Adhesion - We utilize a reverse cap construction to insure proper hull to deck adhesion. This technique allows each Pioneer a water tight permanent bond of the deck to the hull while the hull is still in the mold. This ensures all hulls are true to form and will not separate. Each Pioneer stays in the mold for no less that 24-hours after the hull is constructed. We do not rush perfection!

Wood free - Pioneer boats are 100% composite. No organic materials at all. Where plywood is the normal method of construction for many, our laminates are cored with structural PVC materials to insure Pioneers are light weight, rigid and absolutely will not ROT.

Unigrig Hull - Pioneer is the first manufacturer in the industry to utilize high cost, high performance bonding agents throughout the entire lineup. While other builders utilize simple fiberglass or structural bonding putties to bond stringer grids, our "Unigrig" process is proven to be the absolute best way to permanently bond a grid system to a hull with zero possibility of hull stringer separation. Essentially, our bonding agents are scientifically proven to be stronger than the fiberglass itself. Similar techniques are used on larger ocean going and performance boats.

Fit and Finish - All Pioneer boats are crafted with upkeep and appearance in mind. We take our time to make sure each boat is finished inside and out. Try removing a bilge hatch or opening up a lid and inspecting the underside. You will find the same glossy finish underneath each compartment or hatch cover. Where others paint in black or webbed finishes to hide imperfection. Pioneer addresses these issues with molded smooth surfaces inside and out. We take the time to do it right!

Hardware - Our quality shows from the tin over copper wiring, chrome over stainless fasteners, top of the line vinyl upholstery and all stainless thru hulls. At Pioneer, it's evident that we strive to make sure every Pioneer is delivered with the best corrosion resistant and longest lasting materials available.

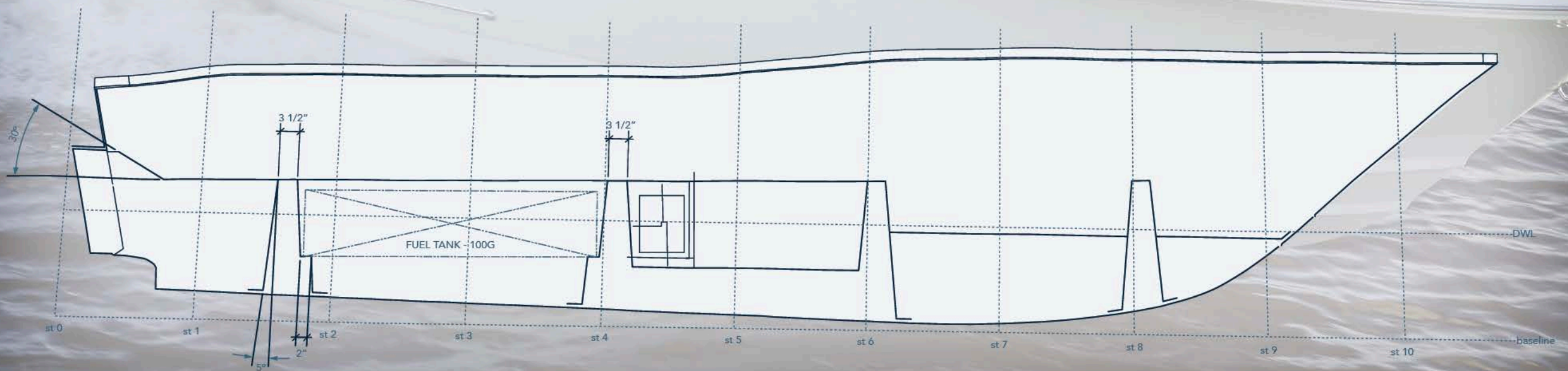
Pioneer Boats are exceptional products that are built for you, your family and your friends to enjoy! Pioneers are built by people who enjoy boating and fishing. We continue to develop products to promote a great boating experience that continues to provide precious memories year after year. Thank you for your interest in Pioneer Boats!

**Happy Boating,
Roy McSwain and Mike Holmes**

Our construction process at Pioneer is built on a single principle...No shortcuts. No doubt, our sales demand that we build more boats but we refuse to accomplish that at the expense of quality. Start to finish we know we could build them faster but we refuse to cut corners to push boats through without each and every one having the quality construction, fit and finish, and absolute premium quality raw materials necessary to keep the reputation we have worked so hard to earn over the years.

There are dozens of examples of this commitment to quality...Here's a giant one. We cap our hulls in the mold. Capping a hull is the process that bonds the deck to the hull or bottom of the boat. Almost everyone in the boat building world uses what's known as the "shoebox method". Build the deck with a lip that fits outside the hull and putty them together. Tolerances are not as critical because you just fill the gap with putty, no matter how big or small. The problem with this method is when you bump a dock or hit something at high speed, the force has a tendency to separate the hull and depending on the force involved, can literally rip the boat apart. Capping our hulls while still in the mold means that the hull remains in it's truest form, and fitting the deck, or cap, inside the hull means the bumps or accidents, no matter how big or small, forces the two pieces together, not apart. This process adds a full day to production time, the time it actually takes to move a boat through the factory.

Most other manufacturers hide another weak point, the transom. Look for that cheap piece of aluminum or plastic fitted across the transom. You won't find it on a Pioneer. A full fiberglass transom is a quality manufacturing process that separates Pioneer from our competition. The transom must withstand more torque and energy than any other surface on the entire boat. The full weight of the motor hangs there, and all the energy that motor creates is transferred right through that transom. More putty and a cheap piece of aluminum or plastic is the norm, but we spend another extra day while a single worker shapes and gelcoats the transom with a full thick fiberglass transom and splash well, strengthening the boat at probably it's most vulnerable surface.

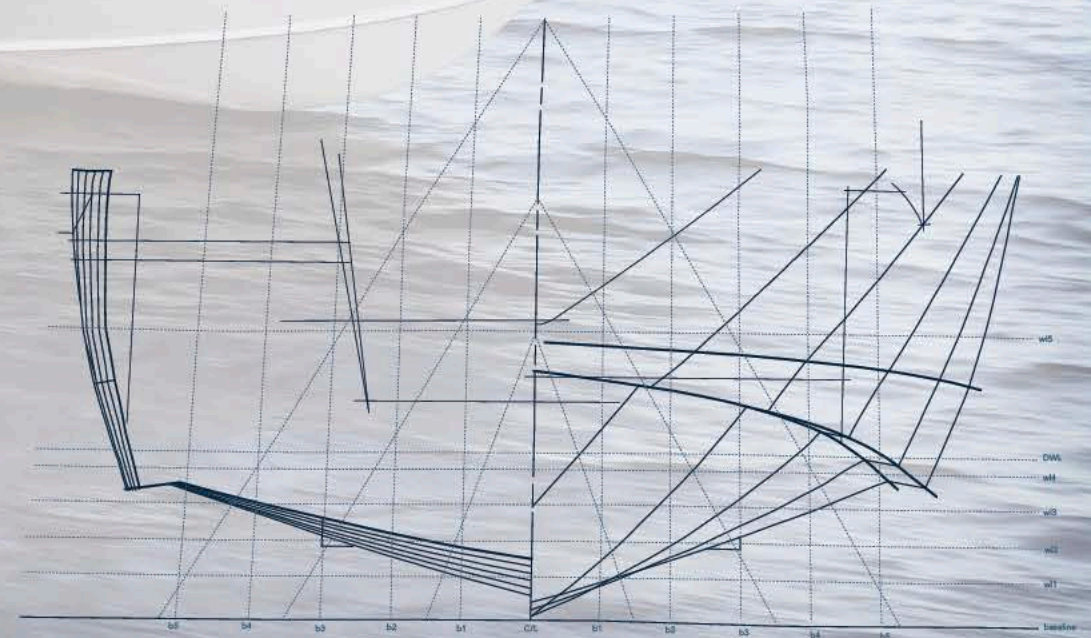
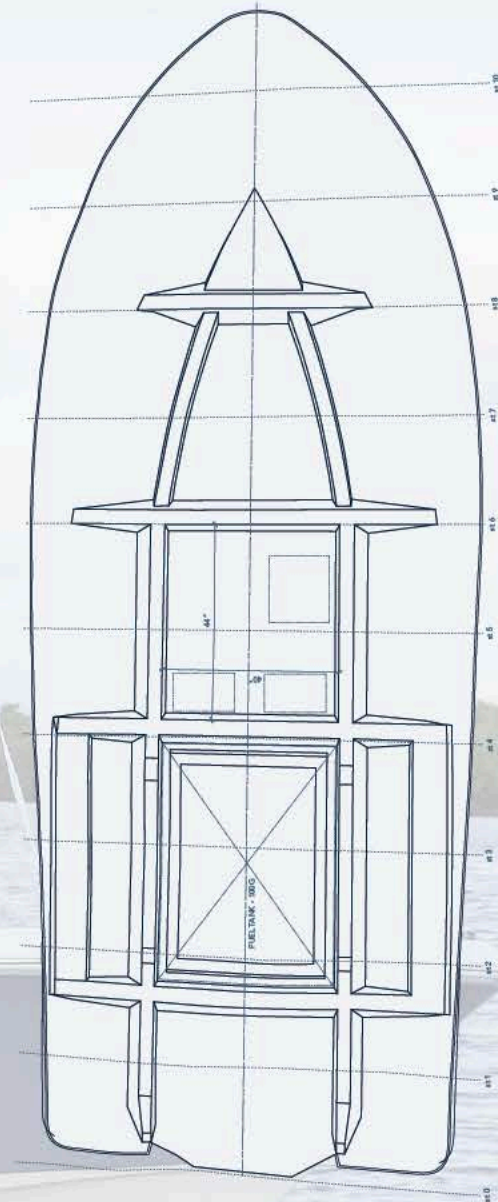


Another weak surface is the long straight fiberglass stretch up the interior side of the boat...usually where horizontal rod holders are placed. Some manufacturers choose to weaken that surface further by simply cutting a giant hole in it and inserting a plastic rod holder pan in the interior side of the boat. We choose to mold our rod holders into the interior surface of the hull. Rounding those corners and utilizing all the space available to the exterior wall does two things: those molded corners add strength to an inherently weak, large flat surface as well as allow room for rods to fit all the way into the exterior wall, allowing room for knee cushions and even toe rails to add value and better fishability to the boat while strengthening the overall boat at the same time.

There are other examples of our commitment to quality throughout every Pioneer model. We invite you to look closely and compare. Every surface inside and out is finished fiberglass. Every box, every lid, right down to the bilge is finished fiberglass. When you really look closely and compare, we are convinced you will realize the Pioneer quality shines, and it's even more evident when you put her in the water. The most solid, dry, smooth ride you will find...The result of all those quality processes we implement throughout the build process.

Take a close look and we're convinced you will find that Pioneer is the brand you'll be proud to choose. And we saved the best for last...once you're a member of the Pioneer family our commitment to quality is just beginning. We are here live and in person every day to take care of you and your Pioneer. **The only reason to move is to move up to a bigger Pioneer model.** Call your nearest dealer and take a close look at our quality. We are convinced you'll choose Pioneer.

Better takes longer...simple as that.



ENGEL HIGH-PERFORMANCE COOLERS

ENGEL COOLERS PRODUCT FEATURES

TruHold Lid™

Reinforced non-skid lid for greater traction, stability and strength whether standing or sitting. Also available: the Engel non-skid cooler pads – easy to apply, easy to clean



ArcticVault Gasket™

Unique freezer style airtight, food-grade silicone gasket keeps lid sealed



Anvil Hinge™

Integrated full-length, self-stopping rear hinge for maximum strength



Unity Latch System™

Recessed marine-grade, adjustable draw latches with stainless steel hardware



Cornerstone Feet™

Non-skid, non-marking feet keep cooler in place while keeping your deck clean



I-BEAM Lid Inserts™

Unique, durable I-Beam inserts allow for maximum weight-bearing strength and prevent lid warping



DuoLock Security Holes™

Dual padlock holes allow you to lock the cooler shut for bear resistance



Quadra-grip Tie-Down Points™

Fits webbing, turn buckle, and other traditional tie-down systems as well as standard crimped security cable to prevent theft



SingleForm HardShell™

Rugged roto-molded polyethylene shell. Easy-to-clean, stain resistant



Flick Drain Plug™

Unique recessed “one-twist” opening drain plug with lanyard hole



ENGEL.



SUZUKI
FOUR STROKE

115



THE
ULTIMATETM
4-STROKE OUTBOARD

FAST? OF COURSE. BUT YOU'VE ALSO GOT TO HAVE FORCE, AGILITY, RESPONSIVENESS – AND NO FEAR. WE BUILD OUTBOARDS TO HANDLE THE BIG LIFT.



We describe performance the way you might describe a fighter. When a world class boxer plants his right foot for a jab, he's setting up a complex series of motions designed to maximize his strength and his weight. The resulting momentum delivers a blow far beyond the sum of the parts

Our approach to performance is like that. Lightweight components magnify the power generated by our large displacement engines. Fuel injection and integrated electronics take full advantage of precise timing and ambient conditions. Mechanical efficiencies eliminate wasted effort and provide quick recovery. So yes, you go faster, quicker, like an eagle, like a shark, like a fist.



If an engine has to work hard just to drag itself around, you're going nowhere fast. That's why Suzuki keeps weight to a minimum. We use innovative materials and simplify components and systems to deliver a power-to-weight ratio that assures top speed and acceleration.



Engines eat and breathe fire, so controlling the mix is vital to top performance. All our engines, from 9.9 to 350 horsepower feature electronic fuel injection. Our Inline 4s and V6s rely on an advanced network of sensors to precisely control timing and fuel delivery so you get the most power from every stroke.



We'll say it again, "there's no replacement for displacement." When it comes to torque, big block Suzuki outboards deliver. That's especially critical with the move to bigger boats, whether they're pontoon boats, bay boats or the new breed of center consoles. At Suzuki, our approach to performance is multi-dimensional, starting with the dimensions of our engines.





Webster's Dictionary defines Pelagic as "the water column of the open ocean" and Pioneer's Pelagic 266 is built for exactly that. The open ocean and blue water fishing demands a boat built...actually overbuilt...for whatever conditions are thrown at it.

Everything is big. A deep vee with a pronounced carolina flare and steeper dead rise. Large fuel tank capacity and oversized bait tank. Extra rod holders throughout the boat. A very large flat dash console perfect for multiple large displays to provide you with all the important information at your fingertips.

The Pelagic 266 lives up to it's name in every way. The ultimate big water boat, built for whatever the open ocean cares to dish out, but with enough creature comforts to keep the family happy. Ultimately safe, dry, smooth, and ready to take you in style to the big powerful pelagics that roam the open ocean or out with the crowd for family fun!

Ultimately safe, dry, smooth, and ready to take you in style to the big powerful pelagics that roam the open ocean or out with the crowd for family fun!

PELAGIC

Pioneer

PELAGIC 266



SPECIFICATIONS

Centerline Length	Beam	Draft	App. Weight	Dead Rise	Capacity	Maximum HP	Transom Height	Usable Fuel Capacity
26' 6"	9' 2"	24"	5,000lbs	22°	10 persons	500	25"	171 gal

Pioneer

PELAGIC 266



Large black dash to reduce glare and provide enough mounting surface for the new larger MFD's.

Tilt steering and multilevel footrest for driver comfort.

2 large gloveboxes provide plenty of storage for cell phones, billfolds and other items that need quick access.



Forward console seat backrest with folding armrest with removable Engel cooler.

T-top legs recessed into console to provide more clearance between console and sidewall.



55 gallon aquarium style livewell in the leaning post to help keep weight forward and on the centerline of the boat to improve handling.



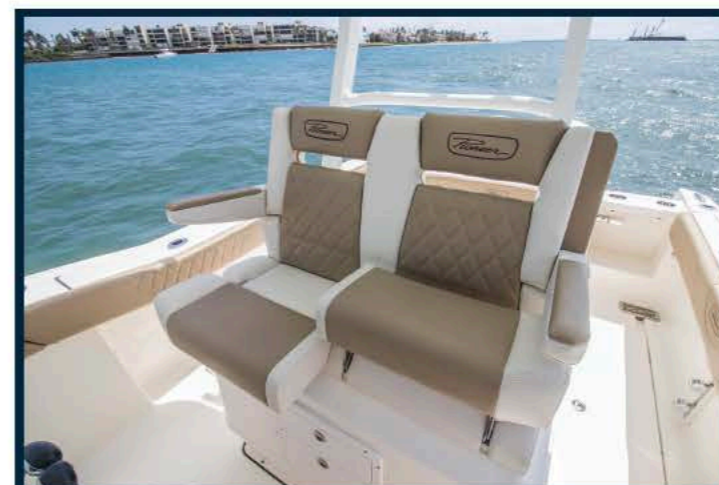
Folding rear bench seat with backrest provides comfortable stern seating.

Dual transom doors for boarding on either side of boat.

5 flush mount rod holders and 4 cup holders across the transom for convenience.



Horseshoe shaped bow seating with folding forward facing backrest and under seat storage that drains overboard. Recessed handrails and cup holders for safety and comfort. In floor storage for larger items.



The double bench helm seat features folding armrest, individual flip up seat bolsters with tackle storage underneath.

PELAGIC 266

Pioneer

FEATURES AND STANDARD EQUIPMENT

7yr Transferable / 10yr Structural Hull Warranty
Dual Gunwale 6 Rod Storage
171 Usable Gal. Fuel Tank
12V. Power Outlet
80 QT. Engel Cooler w/ Cushion
Molded Non-Skid Inner Line
Twin Insulated In-Floor Macerated Fish Boxes
Recessed Bow Hand Rail
Full Bolseter/Coaming Cushions
Self Bailing Cock-Pit
Dual Battery Switch w/ Battery Isolater
White Powder Coat Package
12 SS Cup Holders
SS Deck Hinges & Thru Hulls
Recessed Trim Tabs
Bow Cushion Set

Deluxe Fiberglass Leanpost w/ Tackle Station
(2) 1500gph Bilge Pumps w/ Auto Float Switch
Walk In Console w/ Porta Potty
Sea Star Hydraulic Tilt Power Assist Steering
Single Garmin 12" MFD
8" Spring Line Pull Up Cleats
52gal Lighted Live Well w/Sea Chest
Fold Down Rear Bench Seat
Lighted Compass
Anchor Locker w/ Windlass & Anchor
LED Courtesy Lights
SS Inserted Deluxe Rub Rail
Acrylic Windshield
SS Wheel w/ Speed Knob
Forward & Aft LED Spreader Lights
Deluxe Hard Top
Double Foot Rest

OPTIONAL EQUIPMENT

Black Hull
Abaco Green Hull
Carolina Blue Hull
Seafoam Hull
Silver Hull
Steel Blue Hull
Tanglewood Hull

Spray Shield
Gull Wings
Boat Cover - Sunbrella
Taco Outrigger Mounts
Second Garmin 12" MFD
Pop Up Bumper Holder Set
JL Audio Stereo w/ 4 Speakers

JL Audio Premium Sound System
MK345PC 3 Bank Battery Charger
Marine Toilet Self Contained w/
Dockside Pump Out
Marine Toilet Self Contained w/
Overboard Discharge
Optimus Digital Steering

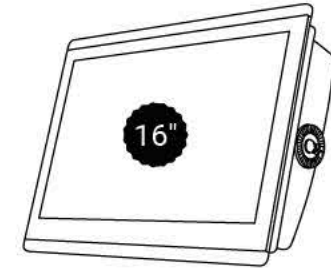
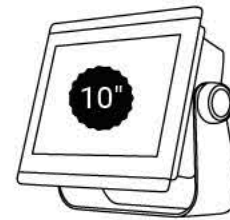


PELAGIC

Pioneer

NEW

GPSMAP® 8600 CHARTPLOTTER SERIES



Chartplotter and chartplotter/sonar combos featuring full HD in-plane switching (IPS) touchscreen displays for wider viewing angles, superior clarity and sunlight readability even with polarized sunglasses. Preloaded BlueChart® g3 U.S. coastal charts and LakeVü g3 inland maps each featuring Navionics® data and Auto Guidance¹ technology.

» HIGH-RESOLUTION, IPS TOUCHSCREEN DISPLAY

..... HIGH-PERFORMANCE PROCESSOR

..... FULLY NETWORKABLE

..... XSV MODELS INCLUDE BUILT-IN SUPPORT FOR THE FULL SUITE OF GARMIN SONAR OPTIONS «

ULTRA HIGH-DEFINITION SONAR



Built-in support for the Ultra High-Definition scanning sonar system, no black box needed.

PANOPTIX LIVESCOPE™



Supports all Panoptix sonar, including Panoptix LiveScope system.

ADDITIONAL SERIES FEATURES

Full HD IPS touchscreen display for wider viewing angles, superior clarity and sunlight readability even with polarized sunglasses

Built-in support for the full suite of Garmin sonar capabilities: CHIRP traditional, ClearVu and SideVu scanning sonars, Ultra-High Definition scanning sonar (no black box needed), the Panoptix LifeScope system and the full line of Panoptix sonars (transducers sold separately)

Adds a stunning appearance with ability to install multiple displays either flat mounted edge to edge to create a sleek glass helm look or mounted flush

Fully NMEA 2000® and Garmin Marine Network capable to easily build your marine system, from sonar, radar and autopilots to instruments, cameras and multimedia

Bluetooth®, ANT®, Wi-Fi® connectivity for quatrix® 5, VIRB® 360, gWind® Wireless 2 and more

Use exclusive OneHelm™ feature to connect to many third-party devices for full control of your boat on your chartplotter screen

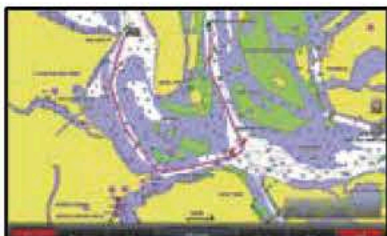
Preloaded with Garmin exclusive BlueChart g3 coastal charts and LakeVu g3 inland maps, which have integrated Navionics data, as well as Auto Guidance¹

SmartMode™ station controls enable presets for one-touch access to docking, cruising, fishing, anchoring and more

Built-in SailAssist provides data, displays and pre-race guidance needed to gain a competitive edge

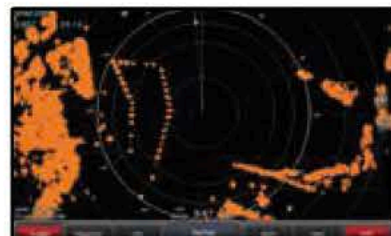
Use built-in Wi-Fi to pair with the free ActiveCaptain® app for access to OneChart™, smart notifications², Garmin Quickdraw™ Community data and more

BLUECHART G3 CHARTS



Highly detailed maps and cartography featuring Navionics data and Auto Guidance technology¹.

GMR FANTOM™ RADAR



Supports Fantom radar with MotionScope™ technology.

¹Auto Guidance is for planning purposes only and does not replace safe navigation operations · ²When paired with a compatible smartphone; see Garmin.com/ble · Wi-Fi is a registered trademark of the Wi-Fi Alliance · The Bluetooth word mark and logos are registered trademarks owned by Bluetooth SIG Inc. and any use of such marks by Garmin is under license.



MM100s-BE

Weatherproof Marine Source Unit

POSITION:

A premium, single-chassis source unit with superb audio performance, excellent ergonomics and advanced audio features, specifically designed for marine applications.



Weatherproof Design:
IP66 rated and built to withstand the elements.



MMR-10W Wireless Remote Controller System



MMR-20-BE Wired Remote Controller



MMR-4U Full-Function NMEA 2000® Network Controller with LCD Display

TECHNOLOGIES

SELLING POINTS:

#1 Engineered for real-world marine duty

- Weatherproof (IP66 rated) design and construction
- Easy-to-read, high-brightness, 3.5-inch full-color LCD display with separate day/night lighting and display themes
- Large, easy-to-use backlit controls for marine/powersports applications
- Intuitive interface with large text for easy legibility while in motion
- Independent user settings for display brightness, button brightness and remote brightness (optional)

#2 On-The-Fly level controls give you complete control of your marine listening experience

- 8-channels of audiophile quality, 4V RMS preamp level outputs
- Configurable Master Volume Control over 4 separate audio zones, each with independent features/control options
 - Volume Controls: Control all zones, or individual zones at any time. A fixed output mode is also available
 - Tone Controls: Bass, Midrange, Trebel and Balance, independent or linked with Zone 1
 - Rename Zone: Create your own names for each zone
 - Volume Limit: Set a custom, maximum allowable volume level for each zone
- All zones feature a zero-clipping audio circuit design, with self-limiting tone controls to prevent speaker system damage

#3 Built for today's modern media with multiple connectivity options

- Digital AM/FM tuner with NOAA weatherband capability
- RDS (Radio Data System) displays extended FM program info, where available
- SiriusXM-Ready™ (tuner, antenna, and subscription sold separately)
- Store up to 18 preferred channels, programmable across all tuner bands
- Bluetooth® v2.1 with Qualcomm® aptX™ audio streams top-quality audio from compatible devices
- USB 2.0 direct-digital connection accesses music files on your USB storage device or compatible iPhone®, plus 1A USB charging output
- Auxiliary inputs accept audio signals from a wide range of audio sources
- NMEA 2000® Certified - MFD (Multi-Function Display) control functionality using applicable network cables and connectors (sold separately). Customizable naming displayed on Bluetooth devices and MFDs
- Three remote control options (each sold separately)



SUZUKI

Pioneer

We think of the Islander as a boat you can fish with in the morning and cruise in with the family in the afternoon. No doubt, the Islander is built for comfort, for cruising and enjoying waterspouts and island hopping with the family. Plush upholstery throughout from bolsters all around, front deck cushion with forward facing backrests for the ladies, wraparound seating aft as well as plush seating for the captain and guest on the leaning post captain's seating.

This boat gives the gentleman the center console he really desires for fishing with buddies, and still catches the ladies' eye with beautiful lines and creature comforts she thought were only available in a runabout. Just pull a couple of cushions for that early morning fishing trip and know that you are fishing the same dry, comfortable, safe ride as our top of the line blue water deep vee, the Sportfish.

That's right, we start with the same hull that has been acclaimed for its beautiful lines, soft dry ride and fishability for over a decade. Then we add the plush seating and comforts that make the boat perfect for what it's used most for....having fun with the family. The perfect way for giving the wife and family exactly what they want...lots of plush seating, bathroom in the console, bow cushion and bolsters forward and wraparound seating aft.

Hidden away are bait tanks and rod holders, smaller tanks and less rod holders than you'll find in the Sportfish, but they are there tucked away ready to serve you well with a fishing boat you'll be proud to captain for your buddies or the boys in the family. The Islander gives you both, with the beautiful lines, fit and finish, and quality manufacturing Pioneer has incorporated in its boats for years.

The perfect family boat!

ISLANDER

Pioneer

ISLANDER 222



SPECIFICATIONS

Centerline Length	Beam	Draft	App. Dry Hull Weight	Dead Rise	Capacity	Maximum HP	Transom Height	Usable Fuel Capacity
22' 1"	8' 7"	14"	2,900 lbs	20°	8 persons 1620 lbs	300	25"	91 gal

Pioneer

ISLANDER 2222



Optional fiberglass hardtop with flush mounted forward and aft spreader lights, overhead map lights, electronics box and optional flush mount speaker pods.



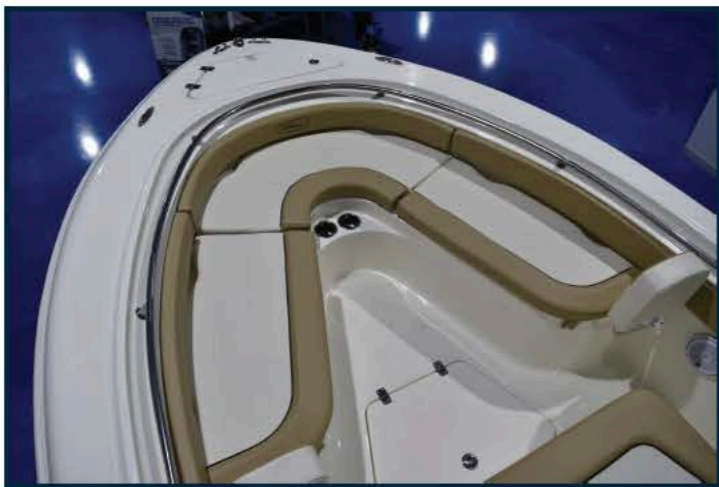
Rear wraparound bench seat with folding backrest for easy access.



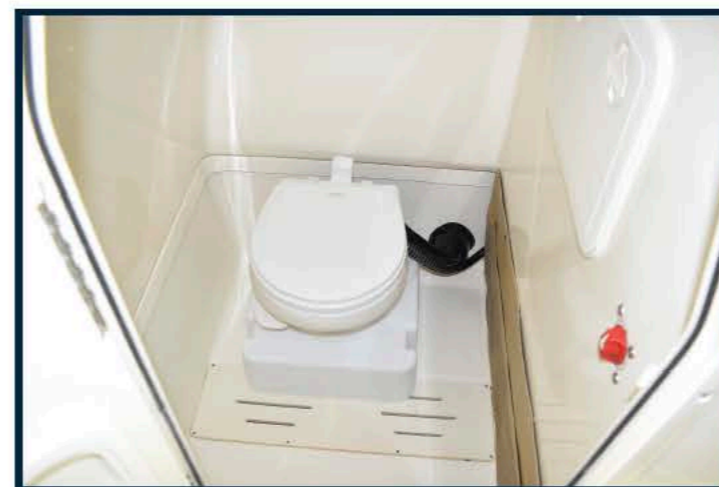
Port side 18 gallon livewell with blue interior standard, starboard side optional. SS toerail in the cockpit sole to provide security while docking, fighting or landing a fish.



Rotomolded Engel cooler comes standard with all Pioneer Boats.



Horseshoe bow seating area with forward facing backrest, recessed SS handrails, cup holders. Large in floor storage.



Fully finished console interior, optional pump out head, battery access and electronics access.

ISLANDER 202



SPECIFICATIONS

Centerline Length	Beam	Draft	App. Dry Hull Weight	Dead Rise	Capacity	Maximum HP	Transom Height	Usable Fuel Capacity
19' 10"	8' 2"	13"	2,400 lbs	18°	8 persons 1200 lbs	200	25"	61 gal

Pioneer

ISLANDER 202



SeaDek padded console top with lighted compass, large flat mounting surface for today's larger MFD's, SeaStar tilt hydraulic steering and SS folding footrest are all standard features.



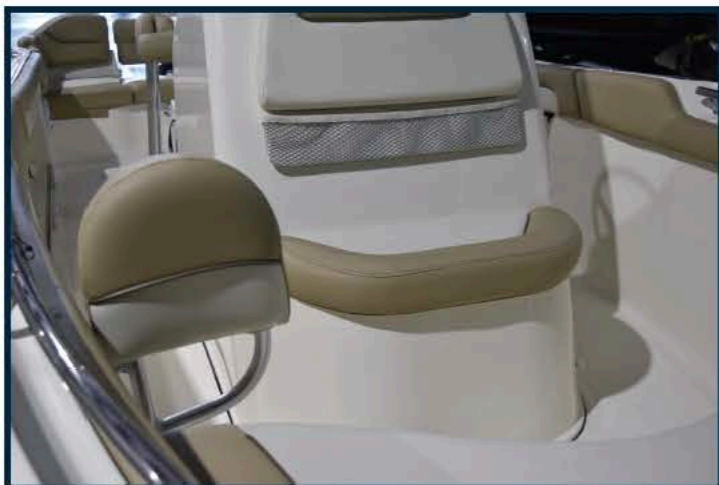
A spacious cushioned bow seating area with forward facing backrest, recessed handrails, cupholders and anchor locker.



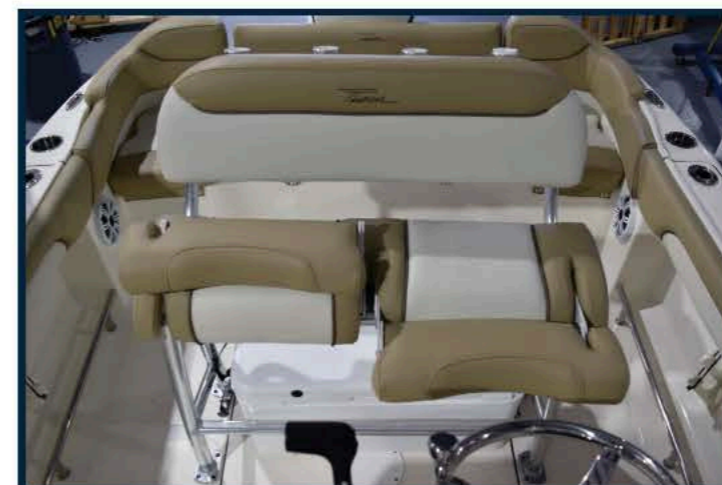
Standard rotomolded cooler under leaning post, SS toerails and bolsters wrapped all the way around the interior.



Full stern wrap around bench with folding backrest and SS scupper drains with check balls to provide a self baling cockpit.



Console front seat and backrest.



Deluxe Leaning Post w/ 4 Rocket Launcher Rod Holders.

ISLANDER 180



SPECIFICATIONS

Centerline Length	Beam	Draft	App. Dry Hull Weight	Dead Rise	Capacity	Maximum HP	Transom Height	Usable Fuel Capacity
17' 10"	7' 7"	11"	1,350 lbs	15°	6 persons 900 lbs	140	20"	31 gal

Pioneer



Full width stern bench seat that folds down for easy access to the swim platform.



The console features a flat dash surface for today's larger electronics, 1" SS removable handrail, removable windshield, 12v power outlet, SS cupholders and SeaDek covering to help protect items like cell phone, handheld VHF radio 7 other small items that you want to keep handy at all times.



Spacious interior with flip down console seating giving you more room than the competitors fixed seating.



Full bow cushion and wraparound bolsters for passenger comfort.

ISLANDER 180

Pioneer

SPORTFISH

FEATURES AND STANDARD EQUIPMENT

SPORTFISH 222

SPORTFISH 202

SPORTFISH 180

7yr Transferable / Lifetime Structural Hull Warranty
 Deluxe Fiberglass Leanpost w/ 5 Rod Holders
 Dual Gunwale Rod Storage w/ Bolster Cushions & Toe Rail
 1500gph Bilge Pump w/ Auto Float Switch
 91 Usable Gal. Fuel Tank
 Step Down Console w/ Porta Potty
 12 Volt On Dash Power Outlet
 Sea Star Hydraulic Tilt Steering
 80 Qt Engel Cooler w/ Cushion
 1" SS Console Rail w/ Grab Rail
 Molded Non-Skid Inner Liner
 6' SS Rear Deck Cleats w/ Hawse Pipe
 32 Gal Lighted Live Well w/ Sea Chest
 SS Wheel w/ Speed Knob
 Twin Insulated Forward Fish Boxes
 6" Spring Line Pull Up Cleats
 Twin 6" Forward Pull Up Cleats
 Port & Starboard Swim Platforms
 Full Low Profile Bow Rail • Rear Folding Jumpseats
 Lighted Compass • Self Bailing Cockpit
 Anchor Locker • Dual Battery Switch
 Courtesy Lights • SS Inserted Deluxe Rub Rail
 6 SS Cup Holders • Removable Windshield
 SS Deck Hinges & Thru Hulls • Recessed Trim Tabs

7yr Transferable / Lifetime Structural Hull Warranty
 Deluze Lean Post w/ 30 Gal Max Air Sea Chest Live Well & Tackle Station
 Dual Gunwale Rod Storage w/ Bolster Cushions & Toe Rail
 500gph Bilge Pump w/ Auto Float Switch
 61 Usable Gal. Fuel Tank
 12 Volt On Dash Power Outlet
 Sea Star Hydraulic Tilt Steering
 65 Qt Engel Cooler
 1" SS Console Rail w/ Grab Rail Removable
 Molded Non-Skid Inner Liner
 Spring Line Pull Up Cleats
 Jump Seat Set w/ Removable Backrest
 Wire Wrapping for Engine Rigging
 SS Deck Hinges & Thru Hulls
 SS Wheel w/ Speed Knob
 Port & Starboard Swim Platforms
 Lighted Compass • Insulated Fish Box
 SS Rear Pull Up Cleats • Self Bailing Cockpit
 Anchor Locker • 4 SS Rod Holders w/ Drain
 Courtesy Lights • SS Inserted Deluxe Rub Rail
 SS Cup Holders • Removable Windshield
 Split Bow Rail (Recessed) • Bow Bolster

7yr Transferable / Lifetime Structural Hull Warranty
 SS Destroyer Wheel
 Max Air Live Well w/ 12gal Sea Chest System
 500gph Bilge Pump w/ Auto Float Switch
 Fold Down Front Console Seat
 Reversible Pilot Seat w/ 80 Qt. Engel Cooler
 1" SS Console Rail w/ Grab Rail Removable
 12 Volt On Dash Power Outlet
 Molded Non-Skid Inner Liner
 4 Tube Console Rod Rack
 Wire Wrapping For Engine Rigging
 Springline Cleat Set
 31 Usable Gal. Fuel Tank
 Rear Pull Up Cleats
 Self Bailing Cockpit
 Anchor Locker
 4 SS Rod Holders w/ Drain
 Courtesy Lights
 SS Inserted Deluxe Rub Rail
 SS Console Cup Holders
 Large Bow Casting Deck
 Removable Windshield
 Bay Star Hydraulic Steering
 SS Flush Deck Hinges & Thru Hulls

OPTIONAL EQUIPMENT

SPORTFISH 222

SPORTFISH 202

SPORTFISH 180

Black Hull • Abaco Green Hull • Carolina Blue Hull • Seafoam Hull • Silver Hull • Steel Blue Hull • Tanglewood Hull • White Powder Coat Package • Bimini Top • T-Top Package • Deluxe Hard Top Package • T-Top Cargo Net • T-Top Spray Shield • Hard Top Spray Shield • Gull Wings • T-Top Boat Cover - Sunbrella • Full Bow Rail • Bow Cushion Set • Bow Table w/ Filler Cushions • Jump Seat Backrests (Pair) • Forward Facing Backrests • Foot Rest • Pop Up Bumper Holder Set • Removable Deluxe Ski Tow • Removable Deluxe Ski Tow - Powder Coated • JL Audio Stereo w/ 4 Speakers • JL Audio Premium Sound System • Trolling Motor Plug • MK230PC 2 Bank Battery Charger • Fresh Water Wash Down Pump Kit • Raw Water Wash Down Pump Kit • Marine Toilet Self Contained w/ Dockside Pump Out • Marine Water Self Contained w/ Overboard Discharge • Underwater LED Blue Lights • Recirculating Live Well

Black Hull • Abaco Green Hull • Carolina Blue Hull • Seafoam Hull • Silver Hull • Steel Blue Hull • Tanglewood Hull • White Powder Coat Package • Bimini Top • T-Top Package • Deluxe Hard Top Package • Cargo Net • Spray Shield • Gull Wings • Boat Cover - Sunbrella • T-Top Box Cover - Sunbrella • Captain Chair Exchange • Full Bow Rail • Bow Cushion • Forward Facing Backrest • Foot Rest • Casting Chair Kit • Base Plate • Pop Up Bumper Holder Set • Removable Deluxe Ski Tow • Spreader Light • JL Audio Stereo w/ 4 Speakers • JL Audio Premium Sound System • 12/24v Trolling Motor Plug • Dual Battery Switch • MK230PC 2 Bank Battery Charger • Recirculating Live Well • Wash Down Pump Kit • Trim Tabs • Console Tack Box • Underwater Blue LED Lights • Fresh Water Wash Down

Black Hull • Abaco Green Hull • Carolina Blue Hull • Seafoam Hull • Silver Hull • Steel Blue Hull • Tanglewood Hull • White Powder Coat Package • Bimini Top • T-Top w/ Radio Box & Kingfish Rod Holders • Gull Wings • Spreader Light • Custom Color Canvas • Cargo Net • Spray Shield • Boat Cover - Sunbrella • T-Top Boat Cover - Sunbrella • Split Bow Rail • Full Bow Rail • Lean Post w/ 65qt Engel Cooler • Lean Post Backrest • Captain Chair Exchange • Bow Cushion • Jump Seat Cushions (4) • Casting Chair Kit • Pop Up Bumper Holders • Base Plate • Swim Platform • Ski Tow • JL Audio Stereo w/ 4 Speakers • JL Audio Premium Sound System • 12/24v Trolling Motor Plug • Dual Battery Switch • MK230PC 2 Bank Battery Charger • Wash Down Pump Kit • Trim Tabs • 2 Tube Under Gunnel Road Rack • Console Tackle Box • Underwater Blue LED Lights



ISLANDER

FEATURES AND STANDARD EQUIPMENT

ISLANDER 222

7yr Transferable / Lifetime Structural Hull Warranty
 Deluxe Lean Post w/ Folding Bolsters
 Dual Gunwale 6 Rod Storage w/ Full Bolster Cushions & Toe Rail
 1500gph Bilge Pump w/ Auto Float Switch
 91 Usable Gal. Fuel Tank
 Step Down Console w/ Porta Potty
 12 Volt On Dash Power Outlet
 Sea Star Hydraulic Tilt Steering
 80 Qt. Engel Cooler w/ Cushion
 1" SS Console Rail w/ Grab Rail
 Molded Non-Skid Inner Liner
 6" Spring Line Pull Up Cleats
 Twin 6" Forward Pull Up Cleats
 Twin Insulated Forward Fish Boxes
 Forward Facing Back Rest
 6" SS Rear Deck Cleats • Deluxe Stern Lounge
 Port Side 18 Gallon Livewell w/ Sea Chest
 Full Low Profile Bow Rail • Bow Cushion Set
 Port & Starboard Swim Platforms w/ Seadek
 Lighted Compass • Self Bailing Cock-pit
 Anchor Locker • Dual Battery Switch
 Courtesy Lights • Folding Foot Rest
 SS Inserted Deluxe Rub Rail • 6 SS Cup Holders
 Removable Windshield • SS Wheel w/ Speed Knob
 SS Deck Hinges & Thru Hulls • Recessed Trim Tabs

ISLANDER 202

7yr Transferable / Lifetime Structural Hull Warranty
 Lean Post w/ Rod Holders & 65 Qt. Engel Cooler
 Dual Gunwale Rod Storage w/ Full Bolster Cushions & Toe Rail
 500gph Bilge Pump w/ Auto Float Switch
 61 Usable Gal. Fuel Tank
 12 Volt On Dash Power Outlet
 Sea Star Tilt Hydraulic Steering
 1" SS Console Rail w/ Grab Rail
 Molded Non-Skid Inner Liner
 Spring Line Pull Up Cleats
 Deluxe Full Transom Seating
 Wire Wrapping For Engine Rigging
 SS Inserted Deluxe Rub Rail
 SS Deck Hinges & Thru Hulls
 SS Wheel w/ Speed Knob
 Forward Seating Back Rests
 Port & Starboard Swim Platforms w/ Seadek
 Lighted Compass • Insulated Fish Box
 Full Bolster • 31" Foot Rest
 2 Spreader Lights Aft • Bow Cushion
 SS Rear Pull Up Cleats • Self Bailing Cock-pit
 Anchor Locker • 4 SS Rod Holders w/ Drain
 Courtesy Lights • SS Cup Holders
 Removable Windshield • Split Bow Rail (Recessed)

ISLANDER 180

7yr Transferable / Lifetime Structural Hull Warranty
 SS Destroyer Wheel
 Max Air Live Well w/ 12gal Sea Chest System
 500gph Bilge Pump w/ Auto Float Switch
 Fold Down Front Console Seat
 Reversible Pilot Seat w/ 80 Qt. Engel Cooler
 1" SS Console Rail w/ Grab Rail Removable
 12 Volt On Dash Power Outlet
 Molded Non-Skid Inner Liner
 4 Tube Console Rod Rack
 Wire Wrapping For Engine Rigging
 Forward Bolster & Bow Cushions
 Full Deluxe Stern Seat (Full Bench)
 61 Usable Gal. Fuel Tank
 Rear Pull Up Cleats
 Self Bailing Cock-pit
 4 SS Rod Holders w/ Drain
 LED Courtesy Lights
 SS Inserted Deluxe Rub Rail
 SS Console Cup Holders
 Large Bow Casting Deck
 Bay Star Hydraulic Steering
 SS Flush Deck Hinges & Thru Hulls
 Bow Cushion
 Removable Windshield • Lighted Compass
 Anchor Locker • Springline Cleats

OPTIONAL EQUIPMENT

ISLANDER 222

Black Hull • Abaco Green Hull • Carolina Blue Hull •
 Seafoam Hull • Silver Hull • Steel Blue Hull •
 Tanglewood Hull • Bimini Top • T-Top Cargo Net •
 White Powder Coat Package • T-Top Package • Deluxe
 Hard Top Package • Spray Shield • Gull Wings • Full
 Bow Rail • T-Top Boat Cover - Sunbrella • Pop Up
 Bumper Holder Set • Removable Deluxe Ski Tow •
 Removable Deluxe Ski Tow Powder Coated • JL Audio
 Stereo w/ 4 Speakers • JL Audio Premium Sound System •
 Starboard 18 Gal. Livewell • Trolling Motor Plug •
 MK230PC 2 Bank Battery Charger • Fresh Water Wash Down
 Pump Kit • Raw Water Wash Down Pump Kit • Marine
 Toilet Self Contained w/ Dockside Pump Out • Recirculating
 Live Well • Marine Water Self Contained w/ Overboard
 Discharge • Underwater Blue LED Lights

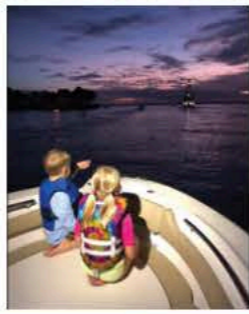
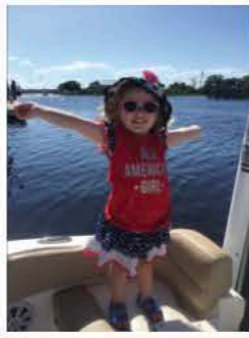
ISLANDER 202

Black Hull • Abaco Green Hull • Carolina Blue Hull •
 Seafoam Hull • Silver Hull • Steel Blue Hull •
 Tanglewood Hull • White Powder Coat Package • Bimini
 Top • T-Top Package • Deluxe Hard Top Package •
 T-Top Cargo Net • Spray Shield • Gull Wings • Boat
 Cover - Sunbrella • T-Top Boat Cover - Sunbrella • Full
 Bow Rail • Removable Deluxe Ski Tow • Deluxe Ski Tow
 Powder Coated • Pop Up Bumper Holder Set • JL Audio
 Stereo w/ 4 Speakers • JL Audio Premium Sound System •
 Spreader Light Forward • 12/24v Trolling Motor Plug •
 Dual Battery Switch • Mk230PC 2 Bank Battery Charger •
 Raw Water Wash Down Pump Kit • Fresh Water Wash Down
 Kit • Trim Tabs • Porta Potty • Underwater Blue LED
 Lights • Casting Chair Kit

ISLANDER 180

Black Hull • Abaco Green Hull • Carolina Blue Hull •
 Seafoam Hull • Silver Hull • Steel Blue Hull •
 Tanglewood Hull • Bimini Top • T-Top w/ Radio Box &
 Kingfish Rod Holders • Custom Color Canvas • Cargo
 Net • Spray Shield • Gull Wings • Boat Cover -
 Sunbrella • T-Top - Sunbrella • Split Bow Rail • Full
 Bow Rail • Lean Post Exchange w/ 65qt Engel Cooler •
 Lean Post Backrest • Captain Chair Exchange • Casting
 Chair Kit • Base Plate • Pop Up Bumper Holders •
 Swim Platform • Removable Deluxe Ski Tow • Spreader
 Light • JL Audio Stereo w/ 4 Speakers • JL Audio
 Premium Sound System • 12/24v Trolling Motor Plug •
 Dual Battery Switch • MK230PC 2 Bank Battery Charger •
 Wash Down Pump Kit • 2 Tube Gunnel Rod Rack (Port or Stbd)
 Underwater LED Blue Lights • Forward Seating Back Rests





ISLANDER

Pioneer



SUZUKI

Pioneer

The Sportfish is Pioneer's premiere near shore and off shore fishing boat. Deep V and a prominent Carolina flare design make for a safe, dry ride in the roughest conditions, but if this is not your first offshore boat, what is really going to make you say "WOW" is the rigidity, the toughness, the way she takes that rough water.

It starts with the unibody stringer grid system, it feels rock solid because we cap the deck inside the hull, then we fill it with foam.... not just to Coast Guard regulations but ultimately nearly doubling those standards by filling the cavities between the hull and deck to give you the solid, tight, safe, feel that you only get when you are pushing this boat to its limit. It is specifically designed and built to be solid and feel safe "on the edge" when you need your boat to perform because water conditions demand it. Over time you'll feel comfortable taking the Sportfish in waters that before would make you turn her back toward the dock and wait for a better day.

After we build in the strength, we add the oversized bait wells, the comfortable seating, the extra rod holders throughout, the toe rail, the knee bolster, the perfect ergonomic design built into this boat because it was designed and built by fishermen. You have plenty of flat console space for the new breed of oversized screens for finding fish and finding your way back. Every detail, big or small, is designed into the Sportfish to make it the best boat you've ever fished.

***From guts to frills, you will not find a boat built with more pride
and more punch than our Pioneer Sportfish!***

SPORTFISH

Pioneer

SPORTFISH 222



SPECIFICATIONS

Centerline Length	Beam	Draft	App. Dry Hull Weight	Dead Rise	Capacity	Maximum HP	Transom Height	Usable Fuel Capacity
22' 1"	8' 7"	14"	2,900 lbs	20°	10 persons 1620 lbs	300 615 lbs	25"	91 gal

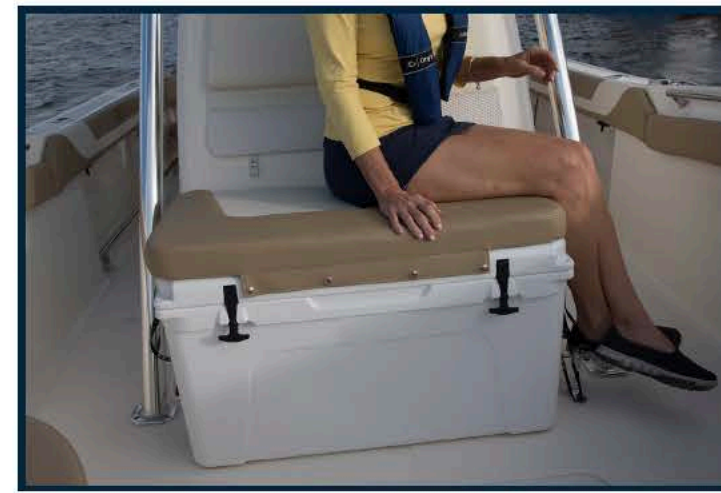
Pioneer

SPORTFISH 222

Pioneer



Large bow area giving you wrap around bolsters, bow cushions with large water tight storage that serve as insulated fish boxes that drain over board, recessed grab rail, cup holders.



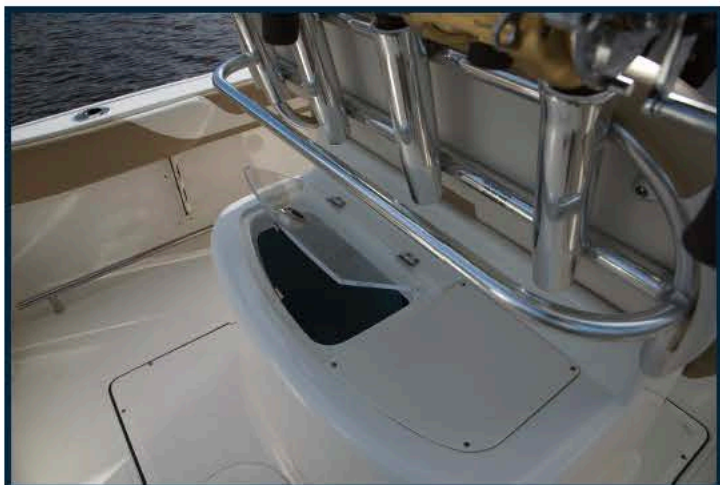
Console cooler seat with backrest and an extremely large front deck floor box.



Massive console for two 12" displays for that offshore adventure.



More cushion more comfort on this leaning post with storage, subwoofer mounting location and heavy duty rocket launcher rod holders for large offshore rods.



32 Gal. Baitwell w/ Clear Lid, Cutting Board and 4 Rocket Launcher Rod Holders.



Very spacious stern with seating that folds out of the way while fitting fish or getting in and out.

SPORTFISH 202



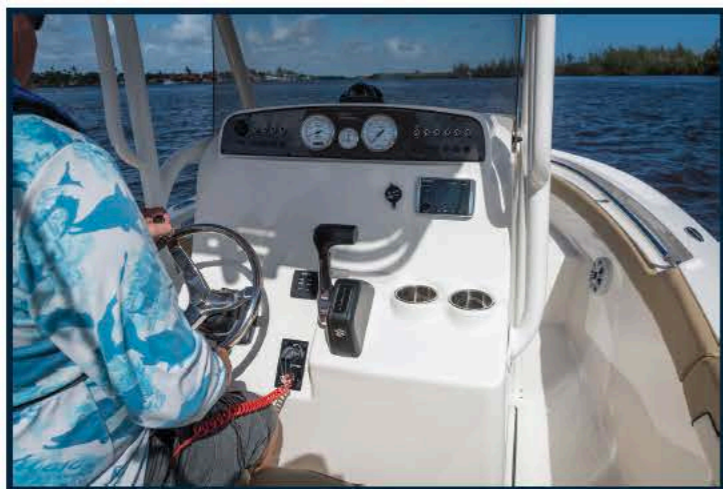
SPECIFICATIONS

Centerline Length	Beam	Draft	App. Dry Hull Weight	Dead Rise	Capacity	Maximum HP	Transom Height	Usable Fuel Capacity
19' 10"	8' 2"	13"	2,400 lbs	18°	8 persons 1200 lbs	200	25"	61 gal

Pioneer

SPORTFISH 202

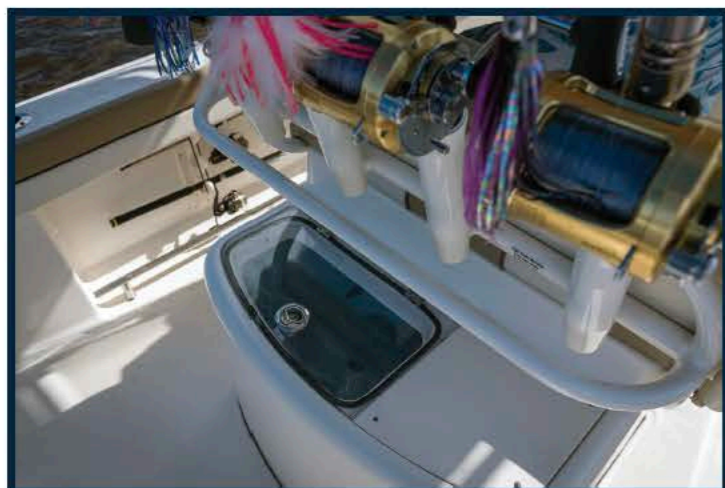
Pioneer



Large dash to accommodate today's larger multi-function displays, 12v power outlet, lighted waterproof toggle switches, tilt helm for driving comfort & cup holders for convenience.



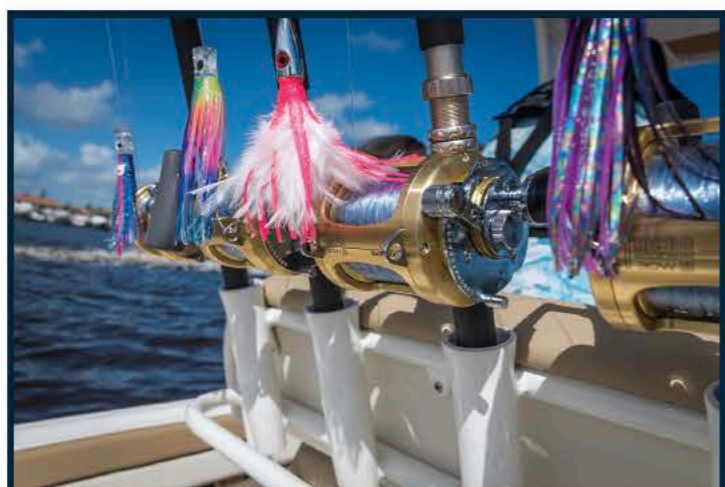
Forward insulated fish/storage box.



30 gallon baitwell/prep station in leaning post.



Removable rear jump seats with removable backrest revealing another rod holder.



4 rocket launcher style rodholders on leaning post backrest with spacing to accommodate larger size reels.



Dual swim platforms for ease of entrance and exit.

SPORTFISH 180



SPECIFICATIONS

Centerline Length	Beam	Draft	App. Dry Hull Weight	Dead Rise	Capacity	Maximum HP	Transom Height	Usable Fuel Capacity
17' 10"	7' 7"	11"	1,350 lbs	15°	6 persons 900 lbs	140	20"	31 gal

Pioneer

SPORTFISH 180

Pioneer



Cooler seat made with the best cooler on the market framed with 316 grade stainless steel hardware and a flip flop back rest.



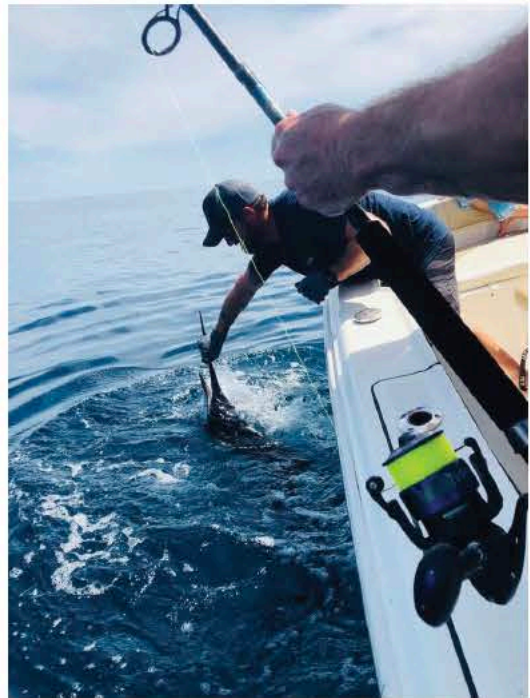
Flip up seat on the front of the console allowing for more interior room while fishing.



Flat dash surface for today's larger electronics, 1" SS removable handrail, removable windshield, 12v power outlet, SS cupholders and SeaDek covering to help protect small items.



Rear seating with high backrest, storage and livewell under cushions, SS stern cupholders and an easy access swim platform.



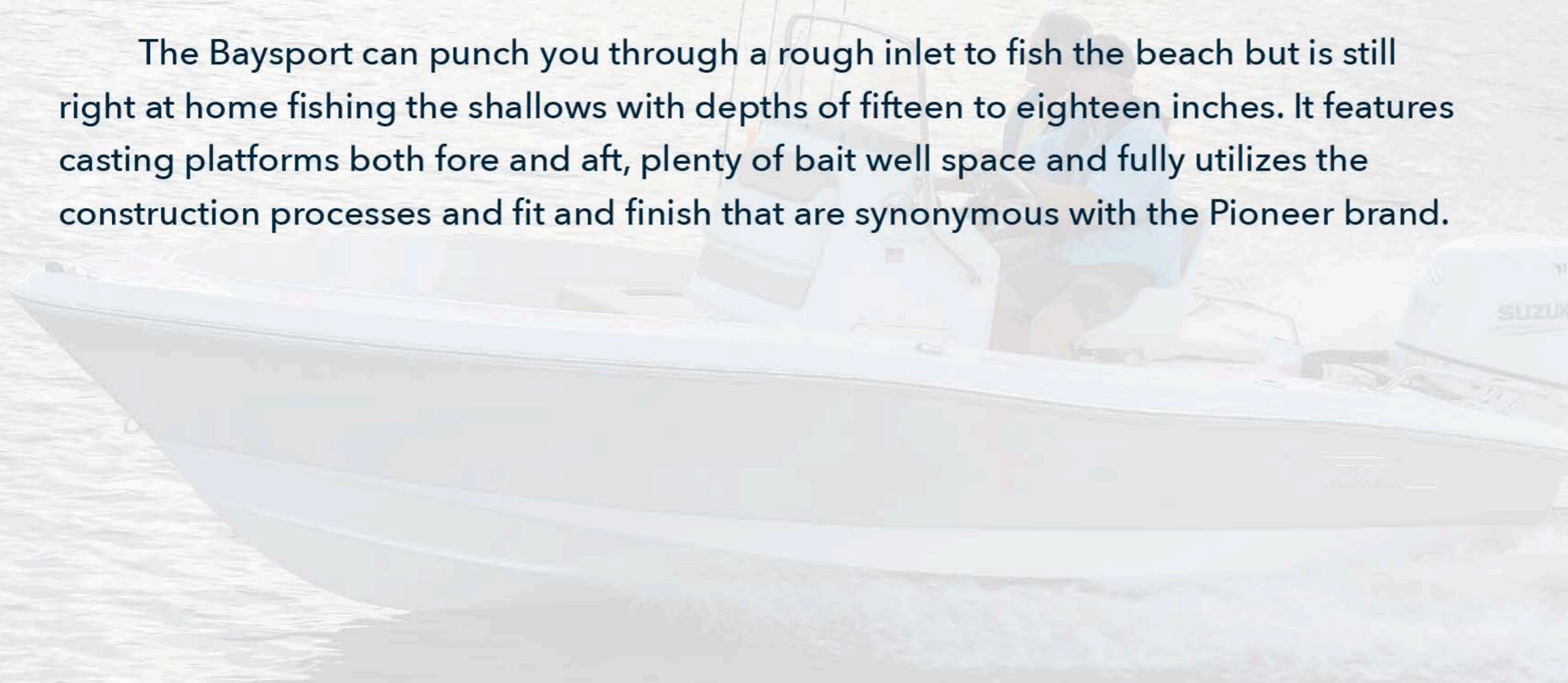
SPORTFISH

Pioneer



The Baysport is the hybrid in our Pioneer lineup. It's a cross between our Sportfish model and a bay boat. It utilizes the Carolina flare so prominent in the Sportfish but it's bow can accommodate a trolling motor.

The Baysport can punch you through a rough inlet to fish the beach but is still right at home fishing the shallows with depths of fifteen to eighteen inches. It features casting platforms both fore and aft, plenty of bait well space and fully utilizes the construction processes and fit and finish that are synonymous with the Pioneer brand.



*Utilizes the Carolina flare so prominent in the Sportfish
but it's bow can accommodate a trolling motor.*

BAYSSPORT

BAYSPOURT 220



SPECIFICATIONS

Centerline Length	Beam	Draft	App. Dry Hull Weight	Dead Rise	Capacity	Maximum HP	Transom Height	Usable Fuel Capacity
21' 1"	8' 6"	13"	2,550 lbs	15°	8 persons 1300 lbs	250	25"	81 gal

Pioneer

BAYSPOORT 220



The console features a flat dash surface for today's larger electronics, 1" SS removable handrail, removable windshield, 12v power outlet, SS cupholders & SeaDek covering to protect your small items.



Console mounted t-top supports give the most floor space possible.



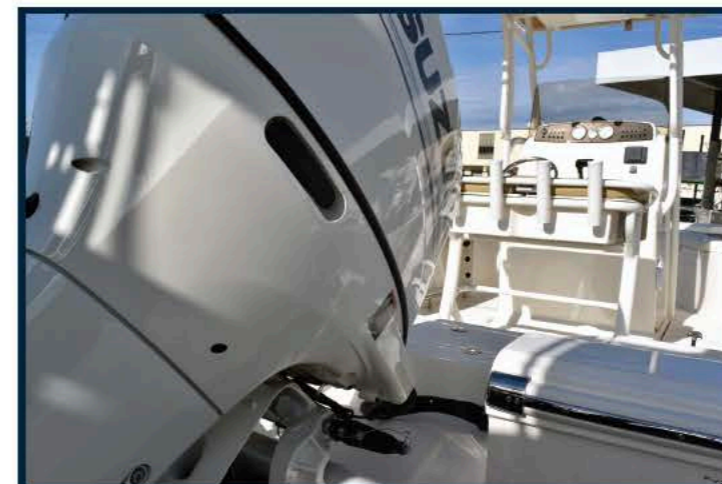
Large bow for multiple anglers to fish from or huge bow cushions area for sun bathing.



Under gunnel road storage, knee bolster and a SS toe rail.



Perfect leaning post with 4 rocket launchers, storage box & optional powder coating customized for maximum interior space.



Hand finished gelcoat transom cap excludes the market standard plastic cap usually used to hide unfinished craftsmanship.

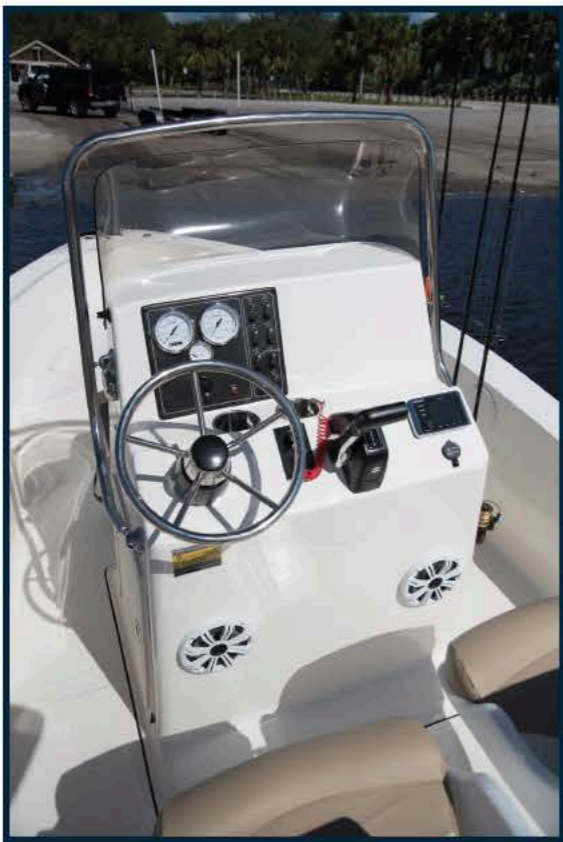
BAYSPOURT 175



SPECIFICATIONS

Centerline Length	Beam	Draft	App. Dry Hull Weight	Dead Rise	Capacity	Maximum HP	Transom Height	Usable Fuel Capacity
17' 10"	7' 4"	11"	1,300 lbs	15°	6 persons 900 lbs	130	20"	31 gal

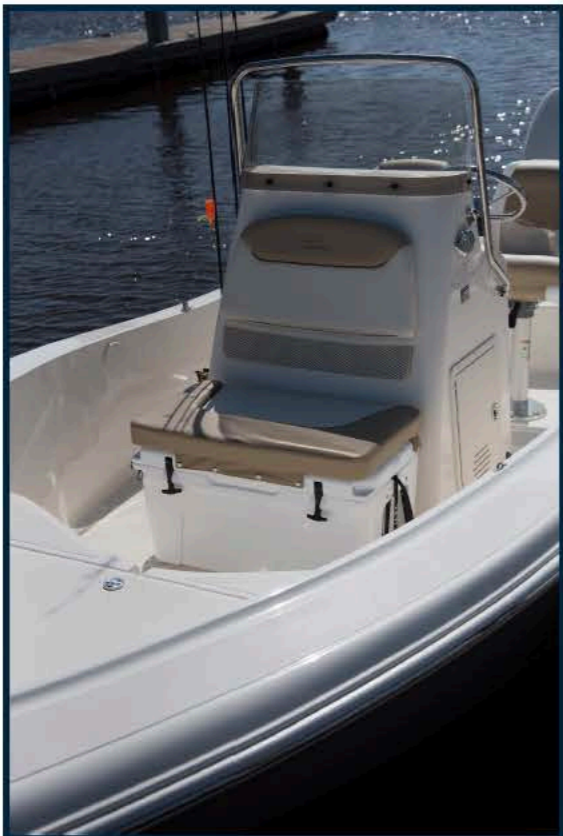
Pioneer



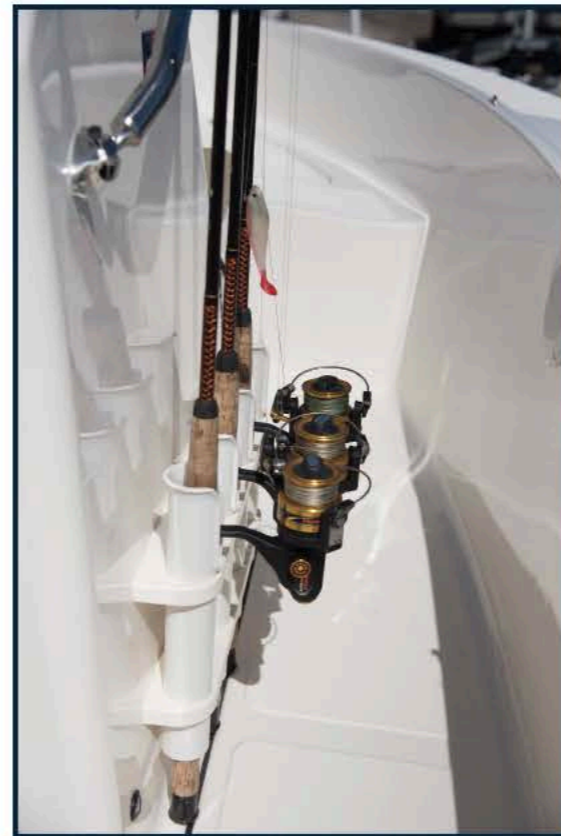
Perfect size console with SS removable grab rail & windshield and large SS steering wheel.



Large bow casting deck with massive under deck storage and diamond molded non skid for the best grip.



Console seating with an industry leading rotomolded cooler, console entry door & removable SS grab rail & windshield.



4 bank rod holder placed on side of conole for accessibility.

BAYSPOORT 175

FEATURES AND STANDARD EQUIPMENT

BAYSPORT 220

BAYSPORT 175

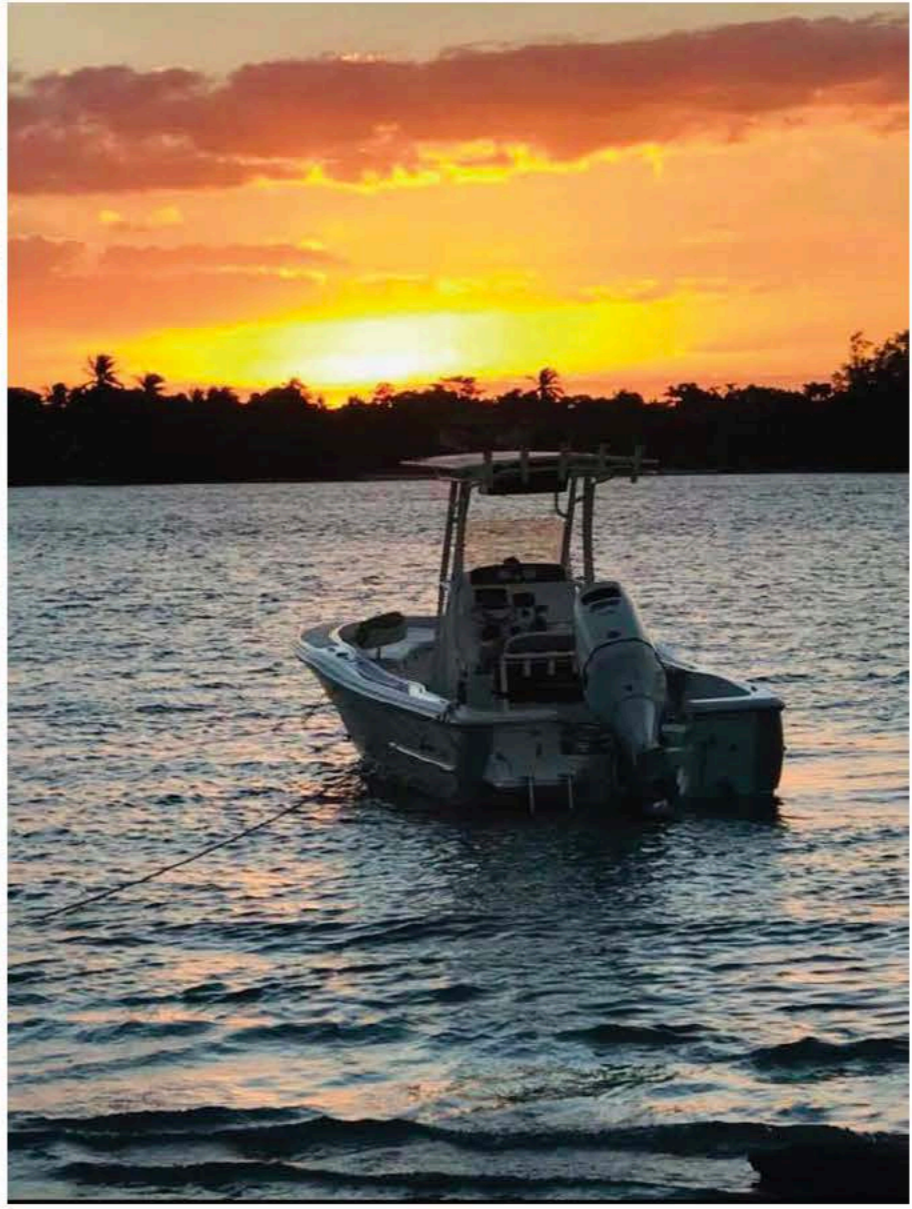
7yr Transferable / Lifetime Structural Hull Warranty	30 Gal Aft Well w/ Sea Chest	7yr Transferable / Lifetime Structural Hull Warranty	Captain's Chair w/ Pedestal
Deluxe Aluminum Lean Post w/ 4 Tube Rod Rack, Folding Foot Rest & Tackle Bag	2 Spreader Lights Aft	SS Destroyer Wheel	31 Usable Gal. Fuel Tank
Dual Gunwale Rod Storage w/ Bolster Cushions & Toe Rail	15 Gal Fwd Live Well w/ Sea Chest	Max Air Live Well w/ 18 Gal Sea Chest System	Rear Pull Up Cleats
81 Usable Gal. Fuel Tank	SS Rear Pull Up Cleats	500gph Bilge Pump w/ Auto Float Switch	Self Bailing Cock-pit
12 Volt On Dash Power Outlet	Self Bailing Cock-pit	65 Qt Engel Cooler w/ Seat Cushion	Anchor Locker
Sea Star Tilt Hydraulic Steering	Anchor Locker	1" SS Console Rail w/ Removable Grab Rail	4 SS Rod Holders w/ Drain
65 Qt Engel Cooler	Dual Battery Switch	12 Volt On Dash Power Outlet	Courtesy Lights
1" SS Console Rail w/ Grab Rail	Courtesy Lights	Molded Non-Skid Inner Liner	SS Inserted Deluxe Rub Rail
Molded Non-Skid Inner Liner	SS Inserted Deluxe Rub Rail	4 Tube Console Rod Rack	SS Console Cup Holders
Spring Line Pull Up Cleats	SS Cup Holders	Wire Wrapping For Engine Rigging	Large Bow Casting Deck
Lighted Compass	SS Deck Hinges & Thru Hulls	Captain's Chair w/ Pedestal	No Fed Back Steering
Insulated Fish Box	SS Wheel w/ Speed Knob	31 Usable Gal. Fuel Tank	Removable Windshield
12/24V Trolling Motor Plug	Port & Starboard Lockable Rod Storage	Rear Pull Up Cleats	SS Flush Deck Hinges & Thru Hulls
Wire Wrapping For Engine Rigging		Self Bailing Cock-pit	

OPTIONAL EQUIPMENT

BAYSPORT 220

BAYSPORT 175

Black Hull	Boat Cover - Sunbrella	JL Audio Stereo w/ 4 Speakers	Black Hull	Full Bow Rail	JL Audio Stereo w/ 4 Speakers
Abaco Green Hull	T-Top Boat Cover - Sunbrella	JL Audio Premium Sound System	Abaco Green Hull	Jump Seats w/ Stern Rails	JL Audio Premium Sound System
Carolina Blue Hull	Full Bow Rail	MK230PC 2 Bank Battery Charger	Carolina Blue Hull	Jump Seat Center Cushion	Baystar Hydraulic Steering
Seafoam Hull	3pc Bow Cushion Set	MK230PC 3 Bank Battery Charger	Seafoam Hull	Lean Post	12/24V Trolling Motor Plug
Silver Hull	Lean Post Backrest	Recirculating Live Well	Silver Hull	Lean Post Backrest	MK230PC 2 Bank Battery Charger
Steel Blue Hull	Removable Deluxe Ski Tow	Wash Down Pump Kit	Steel Blue Hull	Bow Cushion	Dual Battery Switch
Tanglewood Hull	Removable Deluxe Ski Tow - Powder Coated	Fresh Water Wash Down Pump Kit	Tanglewood Hull	Casting Chair Kit	Recirculating Live Well
White Powder Coat Package	Fwd Seating Backrests	Trim Tabs	Bimini Top	Base Plate	Wash Down Pump Kit
Bimini Top	Casting Chair Kit	Underwater Blue LED Lights	Custom Color Canvas	Pop Up Bumper Holder	Tackle Box
T-Top Package	Base Plate	Jackplate w/ Pro Trim	Boat Cover - Sunbrella	Springline Cleat Set	Underwater Blue LED Lights
Spreader Light Forward	Pop Up Bumper Holder		T-Top Boat Cover	Swim Platform	
T-Top Cargo Net	Swim Platform		Cargo Net	Spreader Light	
Spray Shield			Spray Shield	Lighted Compass	
Gull Wings			Gull Wings	Ski Tow	
			Split Bow Rail	Trim Tabs	



BAYS SPORT

Pioneer

You've Picked Your Boat - Now Get Your Gear!

Hats and Visors



Apparel



...and more!



To view our complete catalog and to purchase, visit us online at:

www.PioneerBoats.com

The Pioneer family would first like to thank you for your time to carefully look over our product line in this brochure. We hope you have also spent some time online at PioneerBoats.com. There you will find more detailed information, have the ability to build your own Pioneer boat with the accessories you choose, and see videos that give you a better idea about our construction processes and manufacturing integrity that separate Pioneer from the competition.

First and foremost, here at Pioneer we are a family, and as a new Pioneer owner, we would like to welcome you to that family. Now that you have chosen Pioneer you'll get to experience the part of your purchase where the Pioneer light shines the brightest...our undivided attention to you as a Pioneer owner. If you have questions or concerns, when you call Pioneer you will not be greeted by a computerized menu, you'll talk to a person who has hands-on knowledge of every piece and part in your boat and you will be treated like family.

We are always here to ensure that as you enjoy your Pioneer product throughout the next few years, we will be here for any questions or concerns you might have. Now you will have first-hand experience on our product and the performance and pleasure the Pioneer lifestyle brings to you and your family. Now that you're a member of the Pioneer family, our number one priority is to make sure that the next boat you buy is a Pioneer as well.



Once again, welcome to the family!



Pioneer Boats | 208 Upchurch Ln, Walterboro, SC 29488 | 843-538-6604